

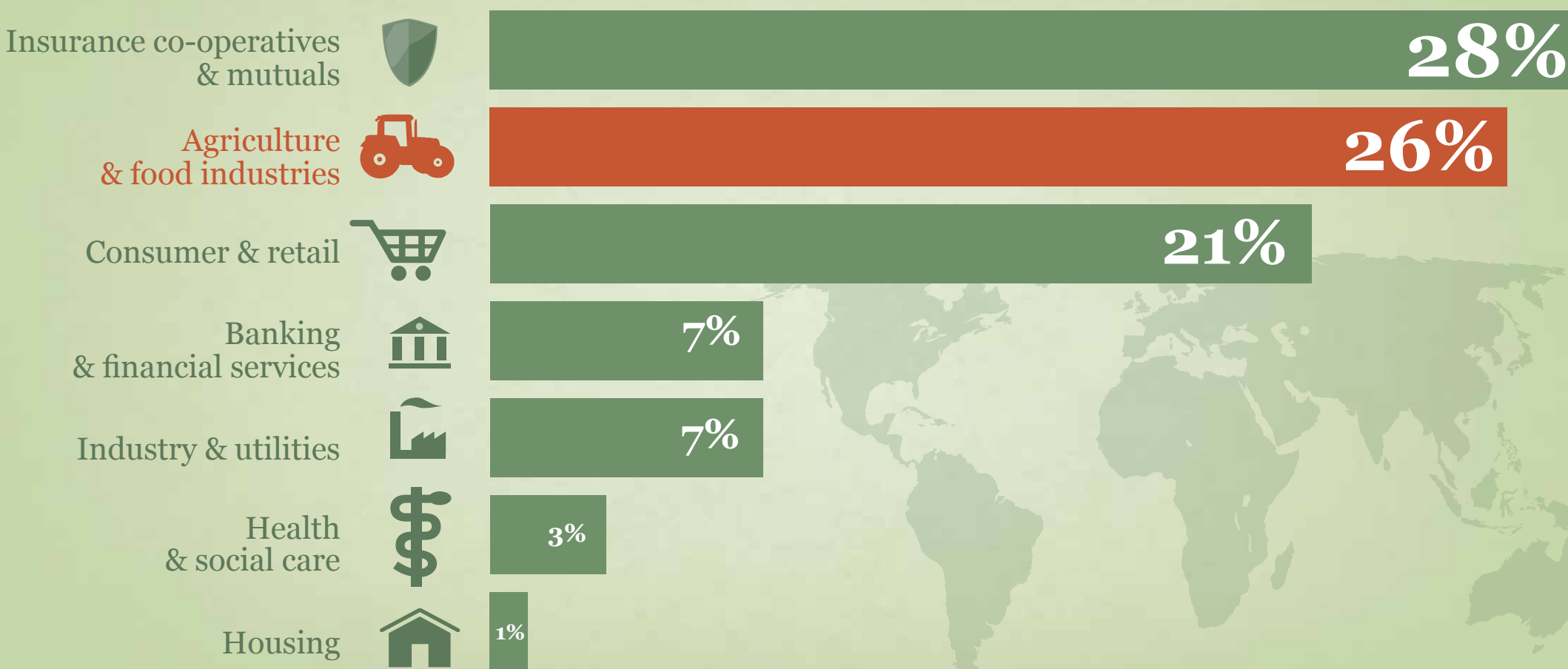
TOWARDS COOPERATIVES

KEY MESSAGE

Public goods such as nature, landscape and climate proofing exceed the scale of an individual farm. Farmers' and other landowners' contribution to the delivery of such public goods can be amplified by taking a collective approach. In the Netherlands different kinds of associations of farmers and other landowners have shown promising results. The CAP stimulates this bottom up approach to the delivery of public goods throughout Europe.

THE POWER OF COLLECTIVITY IN AGRICULTURE

COOPERATIVES BY SECTOR OF ACTIVITY WORLDWIDE



COOPERATIVE POWER USED FOR PUBLIC GOODS

TAKING A COLLECTIVE APPROACH OFFERS THE FOLLOWING OPPORTUNITIES:



FUTURE: FOCUS ON COOPERATIVE FARMERS

SHIFTING RESPONSIBILITIES FROM GOVERNMENT TO WELL ORGANISED FORMS OF COLLABORATION WILL (IN TIME) LEAD TO LESS EXECUTION AND IMPLEMENTATION COSTS

More

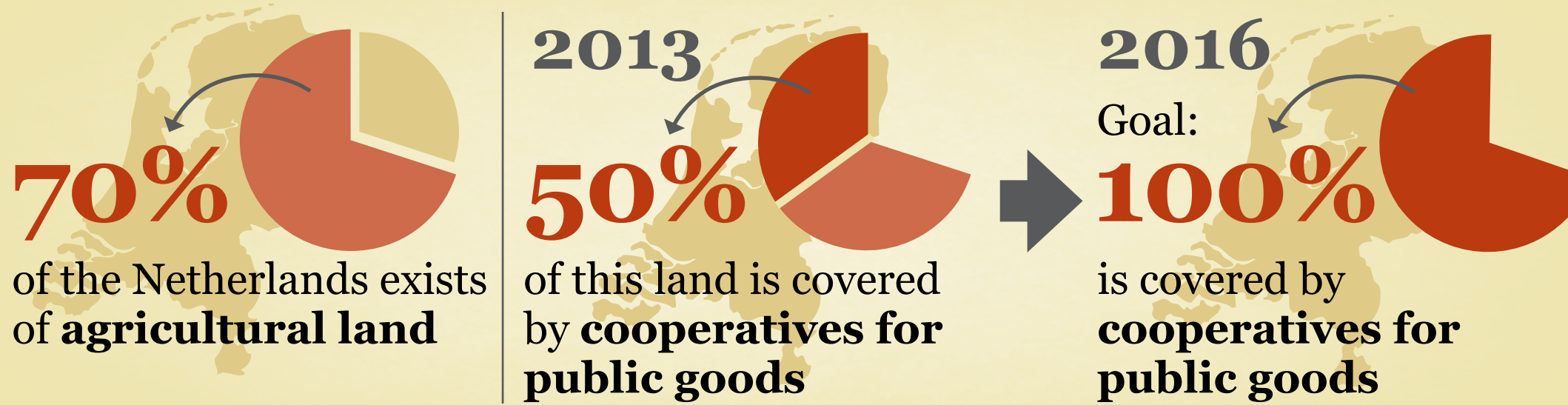
- * Entrepreneurship
- * Cooperation
- * Coherence
- * Efficiency
- * Effectiveness



Less

- * Administrative burden
- * Execution costs

THE DUTCH AMBITION



Farmer's associations are pivot to the current priorities of the CAP reform: making it greener and simpler. It is in cooperation that farmers can realise agriculture's potential in the delivery of Europe's most important public goods! Europe's Member States already contain a wealth of practical examples of innovative new collective approaches. This joint action of farmers on should form the backbone of a new CAP that really delivers public goods.

WWW.FARMERSGROUPS.EU